



**WEDNESDAY**

# **MORNING REPORT**

**Have a Good Trading Day**



**We simply attempt to be fearful when others are greedy and to be greedy only when others are fearful.**

**- Warren Buffet**



## MARKET PULSE

### INDIAN INDICES

NAME	CMP	NET CH.	%
SENSEX	40682.04	-187.43	-0.46%
Nifty 50	11989.9	-63.05	-0.52%

### INDIAN ADR'S

SYMBOL	CLOSE	GAIN/ LOSS %
DRREDDY	40.27	0.52
HDFCBANK	60.69	-0.36
ICICIBK	14.58	-0.95
INFY	10.10	-1.08
TATA MOTOR	12.82	-1.61
WIPRO	3.85	0

### FII AND MF ACTIVITY

SYMBOL	Rs.(in cr.)
FIIs Eq (Provisional)	-682
DII's Eq (Provisional)	311
FIIs Index Future	1392
FIIs Index Options	876
FIIs Stock Future	547
FIIs Stock Options	79

### CURRENCY

CURERNCY	RBI RATE
RUPEE - \$	72.0919
EURO	80.4531
YEN 100	66.7400
GBP	94.2890

## TOP STORY

- **NBCC India:** Company got orders worth Rs 1,090 crore in December.
- **HT Media:** Unit HT Learning Centers to restructure its 'Studymate' and 'Englishmate' businesses.
- **Goa Carbon:** December total production of calcined petroleum coke at 186.9 million tonnes, exports were nil.
- **PFC:** Fitch rated PFC's proposed USD Notes at 'BBB-'.
- **Navin Fluorine International:** Post successful mechanical completion and plant trials, the company's cGMP capacity addition at Dewas Plant, Madhya Pradesh, has commenced commercial production with effect from January 6, 2020.
- **Bosch:** Trade Unions at the company's plants situated at Bidadi and Naganathapura in Karnataka and Jaipur in Rajasthan are participating in the All India General Strike called by Central Trade Union on January 8..
- **NHPC:** Company raised Rs 500 crore on January 3 in second tranche through private placement of secured, redeemable, taxable, non-cumulative, non-convertible 7.38% NHPC-Y1 Series Bonds.

## MARKET PULSE

### GLOBAL INDICES

NAME	CMP	NET CH.	%
DOW	28583.68	-119.7	-0.42%
NASDAQ	9068.58	-2.88	-0.03%
NIKKEI	23231.58	-344.14	-1.46%
HANG SENG	28101.75	-220.31	-0.78%
SGX NIFTY	12020.50	-100.50	-0.83%

### WORLD COMMODITIES

FUTURE	CMP	%
CRUDE OIL	63.64	1.50%
NATURAL GAS	2.149	-0.60%
GOLD	1593.9	1.24%
SILVER	18.61	1.18%
COPPER	2.799	0.20%

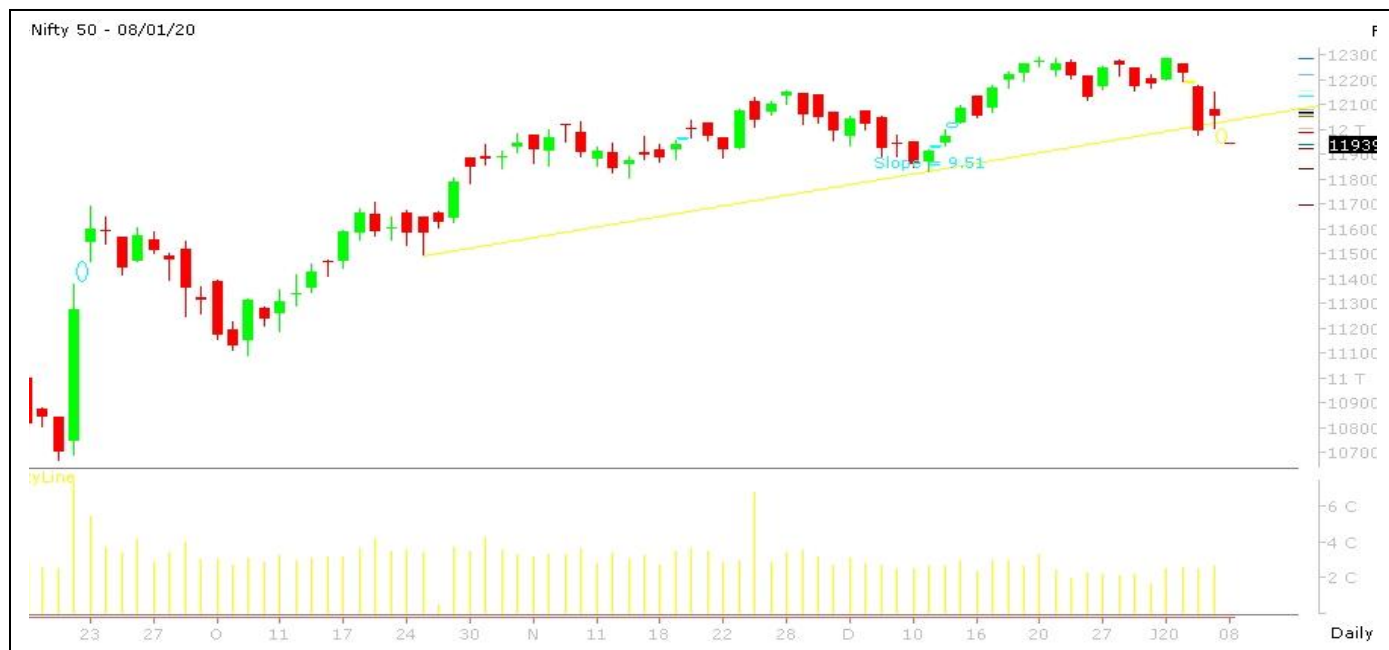
### WORLD EVENTS

**USD** : ADP Non-Farm Employment Change

### RESULTS TODAY



## NIFTY CHART



## MARKET COMMENTARY

The barometer BSE S&P Sensex rose 192.84 points or 0.470/0 to 40,869.47. The Nifty 50 index advanced 59.90 points or 0.500/0 to 12,052.95.

In the broader market, the S&P BSE Mid-Cap index rose 0.650/0 while the S&P BSE Small-Cap index rose 0.990/0. Both these indices outperformed the Sensex.

The market breadth was strong. On the BSE, 1558 shares rose and 931 shares fell. A total of 175 shares were unchanged.

Nifty likely to trade in the range of 11950 - 12150



#### BULK DEALS (BSE)

SCRIP	CLIENT NAME	BUY/SELL	QUANTITY	PRICE
FILTRA	RADHIKA RASTOGI	B	45,000	14.04
HITECHWIND	RAJA CHANDRASHEKHAR VENKATRAMAN	B	40,000	26.05
SAFALHBS	MINSHI CREATION PRIVATE LIMITED	B	538,900	0.63
VMV	RAJESH KUMAR SODHANI HUF	S	60,000	26.42
JSHL	RAJEEV KUMAR GUPTA	B	40,000	17.6

#### BULK DEALS (NSE)

SCRIP	CLIENT NAME	BUY/SELL	QUANTITY	PRICE
CKFSL	DIMENSIONAL EMERGING MARKETS VALUE FUND	SELL	447523	0.4
DCI	MAYUR MAHENDRA CHHEDA	BUY	78000	45.4
DCI	JATIN ATUL MEHTA	BUY	219000	45.4
DCI	BHAVEN MAHENDRA CHHEDA	BUY	78000	45.4
SOLEX	SUFAL INVESTMENT	BUY	50000	35.57

#### SCRIP'S IN F&O BAN

(To resume for normal trading below 80% of market wide limit required)

- **In ban:** YES BANK
- **New in ban:** NONE
- **Out of ban:** NONE

#### Initial Public Offering (IPO)

Company Name	Security type	Issue Start Date	Issue End Date	Status



### NIFTY 50 STOCKS: SUPPORT & RESISTANCE

Symbol	Ser/Exp	Close	Support 1	Support 2	Pivot Point	Resistance 1	Resistance 2
ADANI PORTS	EQ	383.15	378.20	373.25	381.45	386.40	389.65
ASIAN PAINT	EQ	1790.65	1782.73	1774.82	1791.32	1799.23	1807.82
AXIS BANK	EQ	756.95	750.03	743.12	754.52	761.43	765.92
BAJAJ-AUTO	EQ	3121.00	3097.87	3074.73	3135.18	3158.32	3195.63
BAJAJ FINSV	EQ	9505.60	9412.38	9319.17	9471.67	9564.88	9624.17
BAJ FINANCE	EQ	4246.05	4222.12	4198.18	4258.93	4282.87	4319.68
BHARTIARTL	EQ	455.20	452.67	450.13	456.03	458.57	461.93
BPCL	EQ	487.55	485.43	483.32	488.57	490.68	493.82
BRITANNIA	EQ	3053.40	3042.63	3031.87	3053.82	3064.58	3075.77
CIPLA	EQ	473.50	470.57	467.63	475.23	478.17	482.83
COAL INDIA	EQ	211.10	208.67	206.23	210.73	213.17	215.23
DRREDDY	EQ	2864.90	2852.60	2840.30	2872.50	2884.80	2904.70
EICHER MOT	EQ	21600.85	21267.35	20933.85	21804.60	22138.10	22675.35
GAIL	EQ	123.55	121.48	119.42	122.72	124.78	126.02
GRASIM	EQ	766.35	748.73	731.12	758.62	776.23	786.12
HCLTECH	EQ	573.55	571.03	568.52	573.02	575.53	577.52
HDFC	EQ	2466.40	2434.68	2402.97	2453.72	2485.43	2504.47
HDFC BANK	EQ	1286.75	1281.17	1275.58	1284.58	1290.17	1293.58
HEROMOTOCO	EQ	2429.45	2413.67	2397.88	2432.83	2448.62	2467.78
HINDALCO	EQ	220.15	217.03	213.92	219.12	222.23	224.32
HINDUNILVR	EQ	1938.05	1927.83	1917.62	1940.22	1950.43	1962.82
IBULHSGFIN	EQ	325.15	314.10	303.05	321.35	332.40	339.65
ICICI BANK	EQ	540.60	537.00	533.40	539.45	543.05	545.50
INDUSINDBK	EQ		1498.63	1468.27	1516.47	1546.83	1564.67
INFRA TEL	EQ		251.73	249.82	254.62	256.53	259.42
INFY	EQ	734.70	730.13	725.57	735.47	740.03	745.37
IOC	EQ	127.00	126.27	125.53	126.73	127.47	127.93
ITC	EQ	239.85	238.32	236.78	239.63	241.17	242.48
JSW STEEL	EQ	276.45	273.00	269.55	275.00	278.45	280.45
KOTAK BANK	EQ	1671.55	1662.97	1654.38	1673.23	1681.82	1692.08
LT	EQ	1345.30	1321.53	1297.77	1334.77	1358.53	1371.77
M&M	EQ	539.85	535.23	530.62	538.12	542.73	545.62
MARUTI	EQ	7329.85	7305.23	7280.62	7336.62	7361.23	7392.62
NTPC	EQ	121.40	120.62	119.83	121.38	122.17	122.93
ONGC	EQ	128.05	127.22	126.38	127.93	128.77	129.48
POWER GRID	EQ	195.10	194.07	193.03	195.38	196.42	197.73
RELIANCE	EQ		0.00	0.00	0.00	0.00	0.00
SBIN	EQ	339.30	335.15	331.00	337.50	341.65	344.00
SUN PHARMA	EQ	434.95	430.43	425.92	436.52	441.03	447.12
TATAMOTORS	EQ	193.75	187.33	180.92	191.02	197.43	201.12
TATA STEEL	EQ	484.85	475.30	465.75	481.55	491.10	497.35
TCS	EQ	2157.65	2144.58	2131.52	2162.27	2175.33	2193.02
TECHM	EQ	766.05	761.65	757.25	765.40	769.80	773.55
TITAN	EQ	1155.60	1143.77	1131.93	1151.83	1163.67	1171.73
ULTRACEMCO	EQ	4244.80	4123.20	4001.60	4189.75	4311.35	4377.90
UPL	EQ	595.45	587.37	579.28	592.28	600.37	605.28
VEDL	EQ	159.45	156.55	153.65	158.20	161.10	162.75
WIPRO	EQ	248.30	246.47	244.63	248.18	250.02	251.73
YES BANK	EQ	47.35	46.33	45.32	47.42	48.43	49.52
ZEEL	EQ	289.60	281.97	274.33	286.83	294.47	299.33





## NSE CIRCULARS

**NSE Circular: Applicability of Additional Surveillance Measure (ASM) (zip)**w.e.f. JAN08, 2020

**NSE Circular:** Applicability of Short Term Additional Surveillance Measure (ST-ASM) (zip) w.e.f. JAN08, 2020

**NSE Circular:**

## BOARD MEETINGS/ CORPORATE ACTION

[illegible]

## NEWS & RUMOURS:

- **Gold (Spot Dollar) major support = \$1540/\$1515 & Resistance = \$1591/\$1627.**
- **Crude oil range (WTI)->\$57 to \$67.**
- U.S. Stocks Fall Amid Iran Tensions; Dollar Rises: Markets Wrap: - Yuan, Chinese shares rally on trade hope; bonds mixed. West Texas crude drops from multimonth highs; gold up. U.S. stocks fell as investors remained wary of an escalation in tensions with Iran. The dollar gained, while oil continued its retreat from multimonth highs. The S&P 500 headed for its second drop in three sessions, with investors cautious after Iran threatened a military response to a U.S. airstrike that killed a top general four days ago. The Cboe Volatility Index rose above 14 as geopolitics dominated sentiment.
- Euro to US Dollar Exchange Rate Falls Back as Markets Calm from Weekend Panic: - The Euro to US Dollar (EUR/USD) exchange rate is struggling to continue its recent advance attempts, as despite fresh Euro (EUR) support the US Dollar (USD) is firming following days of market panic.
- Falling imports push U.S. trade deficit to three-year low: - The U.S. trade deficit fell to a more than three-year low in November as imports declined further, likely weighed down by the Trump administration's trade war with China, and exports rebounded, suggesting the economy ended 2019 on solid footing.
- Gold Holds Near Six-Year High as Traders Await Iran's Next Moves: - Gold held near the highest level in more than six years as risk appetite crept back into equity markets, with investors on alert for Iran's next move in the showdown with the U.S. Gold, which climbed 2.4% over the past two days to approach \$1,600 an ounce, was little changed Tuesday as equities in Europe and Asia jumped.

## TRENDS & OUTLOOK – DATE: 08-JAN-2020

### PRECIOUS METALS:

COMMODITY (MCX)	S2	S1	PIVOT POINT	R1	R2
GOLD	39850	40120	40570	40930	41254
SILVER	45725	46550	47665	48459	49255

### BASE METALS

COMMODITY (MCX)	S2	S1	PIVOT POINT	R1	R2
COPPER	439	442	447	452	456
ZINC	177.55	180.15	182.75	185.90	189.25
LEAD	147.25	149.70	152.10	154.70	157.65
NICKEL	1001	1015	1029	1046	1059

### ENERGY

COMMODITY (MCX)	S2	S1	PIVOT POINT	R1	R2
CRUDE OIL	4270	4390	4510	4625	4755
NATURAL GAS	144	148	153	159	162

### DATA TALKS : TODAY'S ECONOMIC DATA :

ADP Non-Farm Employment Change, FOMC Member Brainard Speaks, Crude Oil Inventories, 10-y Bond Auction.

When life goes easy, the future welcomes you with excitement

Presenting

# ALGORITHMS

## SBS - Jobbing

SBS Stands for Simple Buying and Selling

The act or practice of buying stocks only to resell them at a profit very quickly. Stock jobbing is a short-term investment strategy that operates on the assumption or existence of liquid markets.

This Trading algorithm is designed basically for jobbing:

**Pre Defined Stop Loss**

**Pre Defined Risk**

**Buy-Sell Both**

**Carry Forward**



## Arbitrage

Arbitrage Stands for Simple Buying and Selling stocks but in another exchange. A Simple Arbitrage Example

As a simple example of arbitrage, consider the following. The stock of Company X is trading at 100 on the NSE while, at the same moment, it is trading for 100.50 on the BSE. A trader can buy the stock on the NSE and immediately sell the same shares on the BSE, earning a profit of .50 per share.

## Market Depth

An informative product, which is designed to see more than the 5 Best ask/ bid available in market.

Generally all trading software's shows Only 5 Bid/ Ask, But this information window allows you to see the full market depth available in market, Apart from it we can sort it with price and quantity. Useful for placing stop losses and tracking the Bulk deals.



# SIP CALCULATOR

Calculates the  
Future Value  
of an  
Investment



SIP Amount (Rs.)  
**10,000**



Investment Frequency  
**Monthly**



Expected Return (p.a.)  
**14.00%**

Year	Principal (Rs.)	Future Value (Rs.)	Appreciation
1	120,000	128,918	8,918
2	240,000	275,884	35,884
3	360,000	443,426	83,426
4	480,000	634,423	154,423
5	600,000	852,161	252,161
10	1,200,000	2,492,923	1,292,923
15	1,800,000	5,652,071	3,852,071
20	2,400,000	11,734,741	9,334,741
25	3,000,000	23,446,403	20,446,403
30	3,600,000	45,996,206	42,396,206
35	4,200,000	89,413,927	85,213,927
40	4,800,000	173,011,040	168,211,040
45	5,400,000	333,970,140	328,570,140
50	6,000,000	643,883,137	637,883,137



**Indira Securities Pvt. Ltd**  
Member: NSE, BSE, CDSL

**Indira Commodities Pvt. Ltd.**  
Member: MCX, NCDEX

**Registered Office**

Indira House, 3rd Floor, 5 Topiwala Lane,  
Opp. Lemington Road Police Station, Grant Road (East), Mumbai - 400007.

**Corporate Office**

204 Amardarshan Building 3<sup>rd</sup> floor, Saket Nagar, Indore - 452018 (M.P.)

**Customer Care**

Tel: +91-731-4797170/ 71/ 72

Email: [customercare@indiratrade.com](mailto:customercare@indiratrade.com) [www.indiratrade.com](http://www.indiratrade.com)

***To get regular updates please whatsapp us on Mob. +91 9300059777***

**INSTITUTIONAL DEALING UNIT**

**Africa House**, 5, Topiwalla Lane, Lamington Road, Mumbai, 400007

Tel: +91-2230080678; WebSite: [www.inspireeducation.co](http://www.inspireeducation.co)

**Disclaimer**

This report is for private circulation within the Indira Group. This report is strictly confidential and for information of the selected recipient only and may not be altered in any way, transmitted to, copied or distributed, in part or in whole, to any other person or to the media or reproduced in any form. This report should not be construed as an offer or solicitation to buy or sell any securities or any interest in securities. It does not constitute a personal recommendation or take into account the particular investment objectives, financial situations, or any such factor. The information, opinions estimates and forecasts contained here have been obtained from, or are based upon, sources we believe to be reliable, but no representation of warranty, express or implied, is made by us to their accuracy or completeness. Opinions expressed are our current opinions as of the date appearing on this material only and are subject to change without notice.